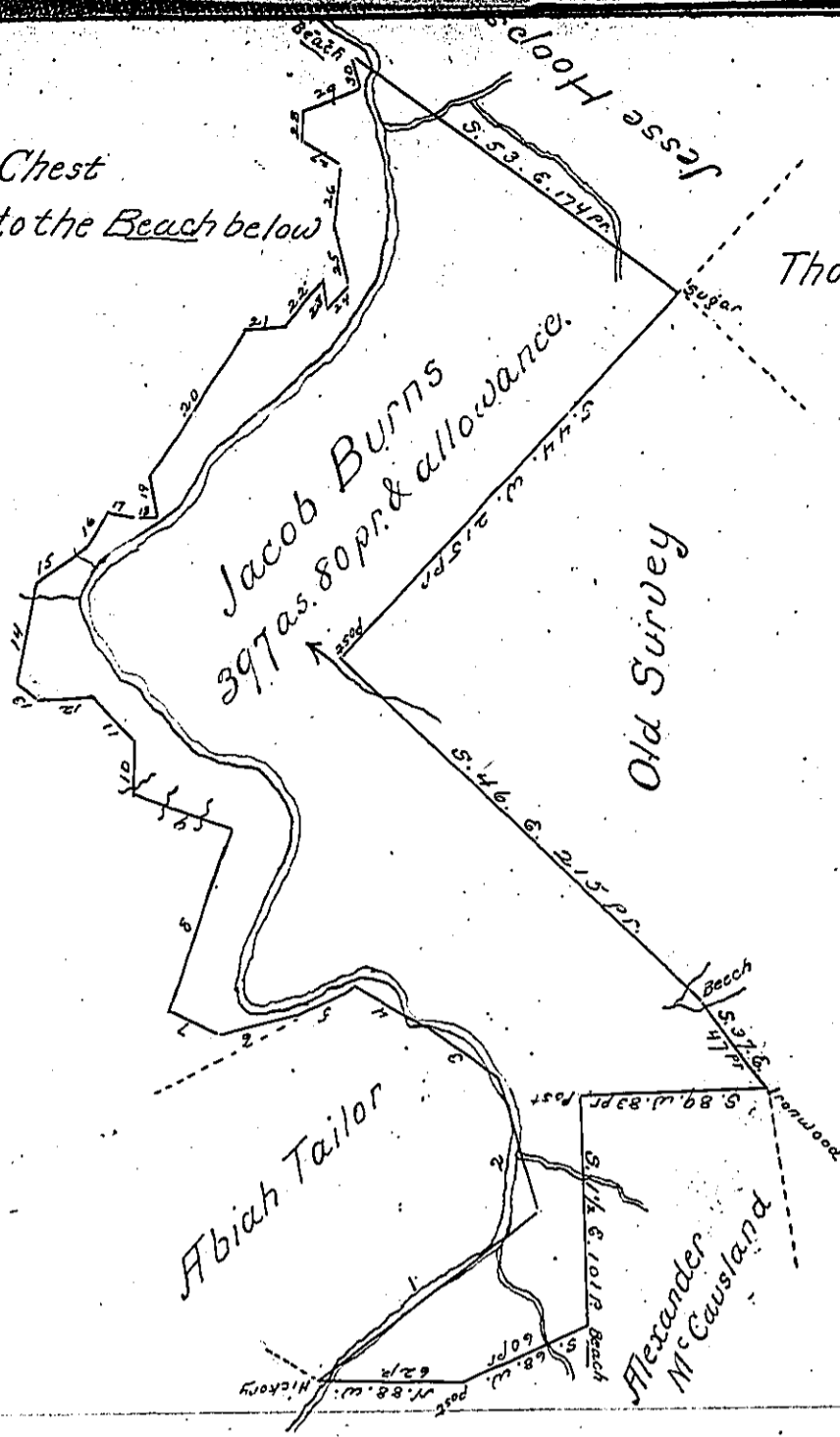


Courses and distances down Chest creek from the Hicory above to the Beach below

1. N. 55. E. 122 1/2 pr to a Post
2. N. 15. W. 60 Po.
3. N. 55. W. 38 Po
4. N. 62. W. 40 Po.
5. S. 65. W. 26 Po.
6. S. 78. W. 35 Po.
7. N. 65. W. 21 Po.
8. N. 20. E. 85 Sugar
9. N. 72. W. 45 Sugar
10. N. 1. W. 24 Beach
11. N. 45. W. 26 Spruce
12. West 24 Po.
13. N. 60. W. 11 Ash
14. N. 11. E. 42 Spruce
15. N. 55. E. 28 Po.
16. N. 33. E. 16 Beach
17. S. 80. E. 12 Beach
18. N. 85. E. 10 Thorn
19. N. 9. W. 18 Birch
20. N. 32. E. 74 Beach
21. N. 86. E. 18 Spruce
22. N. 38. E. 26 Po.
23. S. 8. E. 14 Spruce
24. N. 45. E. 12 Beach
25. N. 15. W. 24 Spruce
26. N. 5. E. 28 Birch
27. N. 51. W. 18 Beach
28. North 12 Spruce
29. N. 66. E. 30 Po.
30. N. 14. W. 14 Beach

Charles Dilworth



Situate on the waters of Chest creek in the townships of Clearfield and Susquehanna in the county of Cambria containing three hundred and ninety seven acres and eighty perches and the usual allowance of six per cent for roads &c. Surveyed the 28th day of November A. D. 1837. In pursuance of a warrant granted to Jacob Burns the 7th day of March 1794.

To John Taylor Esq.
S General

Jacob Leverage D.S.

IN TESTIMONY that the above is a copy of the original remaining on file in the Department of Internal Affairs of Pennsylvania, made conformably to an Act of Assembly approved the 16th day of February, 1833, I have hereunto set my Hand and caused the Seal of said Department to be affixed at Harrisburg, this fifth day of March 1901

Jameon Latta
Secretary of Internal Affairs.